

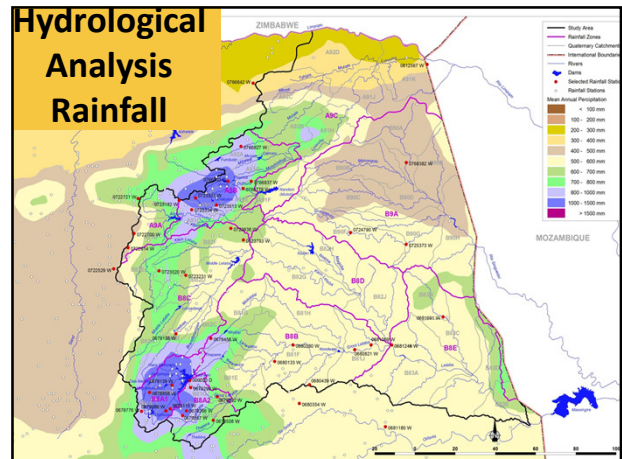
DEVELOPMENT OF A RECONCILIATION STRATEGY FOR THE LUVUVHU AND LETABA WATER SUPPLY SYSTEM

Hydrology Task Rainfall Report

Study Steering Committee meeting
31 October 2012



Hydrological Analysis Rainfall



Hydrological Analysis

Rainfall data analysis and report completed

- Used WR2005 patched point rainfall data as base
- Evaluated records for trends and quality of data
- Extended patched point rainfall stations that was open in 2004 with raw data and patched the period 2004 – 2010
- Developed new catchment rainfall zones based on isohyets
- Generated new catchment rainfall records for new zones

3

Rainfall Conclusions

- The quality of the catchment rainfall records are in general acceptable to good in west, while eastern parts were fair to acceptable
- In some catchment rainfall zones there were no point rainfall stations within the zone
- 96 stations evaluated – only 39 Stations open 2010
- 42 stations selected for use – 18 still open 2010

4

Thank You

5